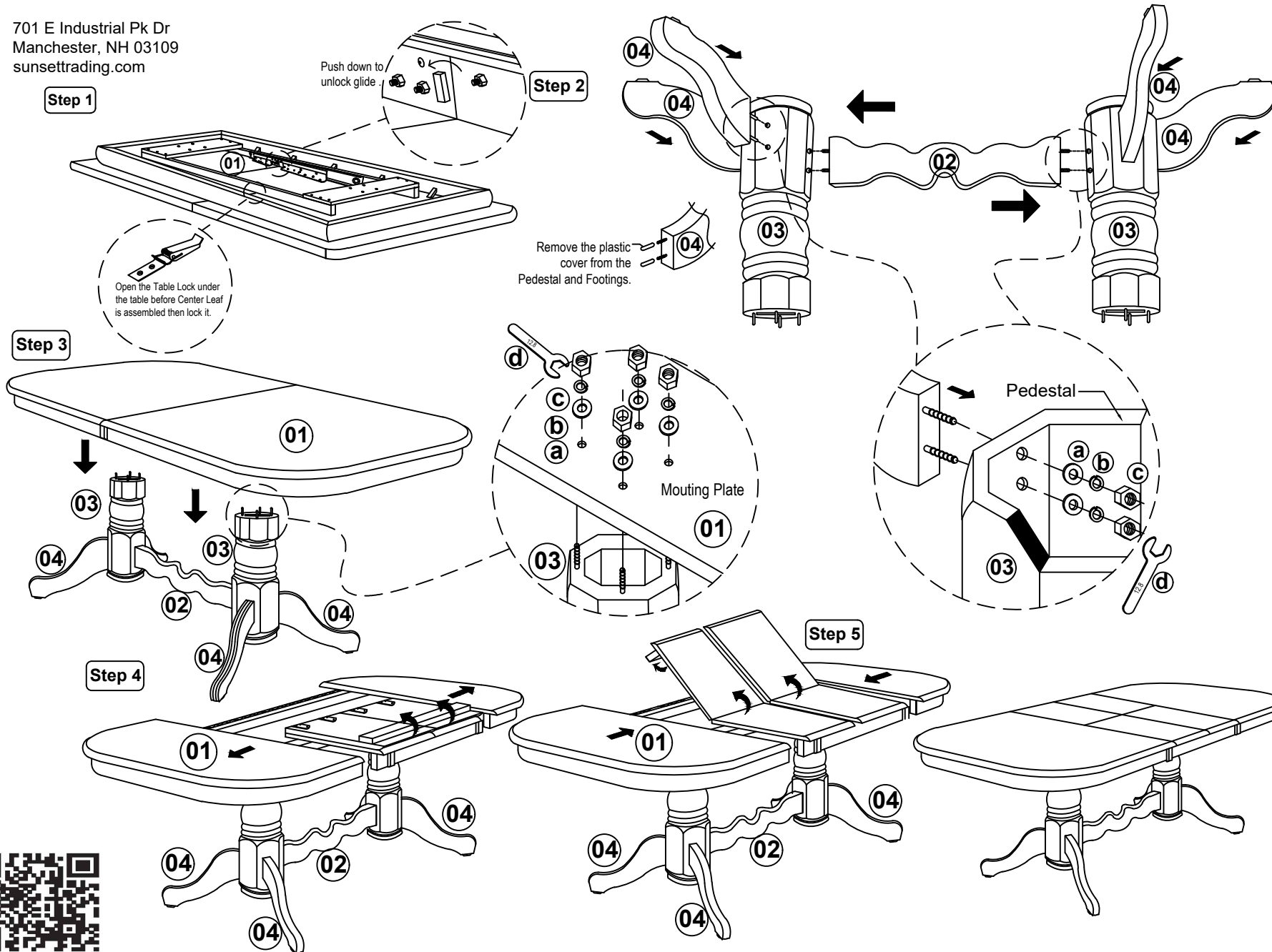

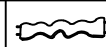
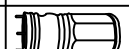







701 E Industrial Pk Dr  
Manchester, NH 03109  
[sunsettrading.com](http://sunsettrading.com)



**List of Parts For 1 Set**

01		Table Top	1
02		Bottom Center Rail	1
03		Pedestal	2
04		Table Leg	4

**List of Hardware for 1 Set**

a		Flat Washer $\frac{5}{16}$ " x 22mm	20
b		Spring Washer $\frac{5}{16}$ "	20
c		Hexagon Nut $\frac{5}{16}$ " x 7mm	20
d		Spanner 12.8 mm	1

**IMPORTANT NOTES**

- Keep all hardware and small parts out of reach of children.
- Remove all staples and packing straps before you start to assemble.
- Do not discard main cartons and wrapping material until assembly is complete.
- Check to be sure you have all parts and hardware.
- Place all wooden parts on a clean soft surface to avoid parts from being scratched.
- Do not tighten all screws/ bolts until completely assembled.
- Check tightness 3x's/year, with use screws can become loose.
- Do not attempt to repair or modify parts that are broken or defective. Please contact us immediately.
- Enjoy your new furniture!

